

# **Software**

**-Barcode Price Computing Printing Scale-**

## **User's Manual**


---

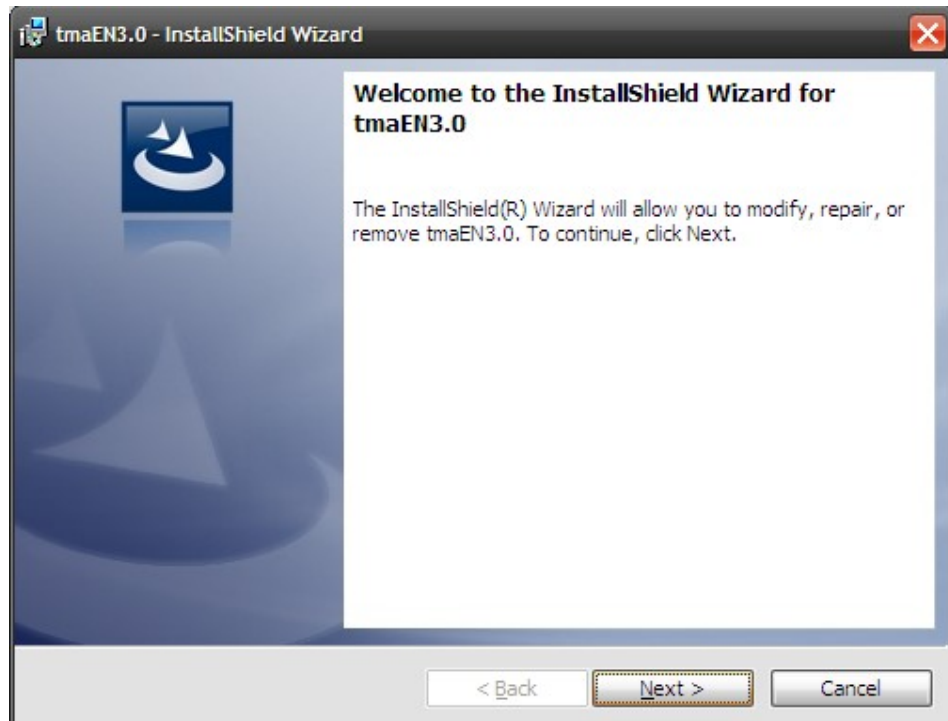
**2020**

# catalogue

<b>1. Software install</b>	<b>3</b>
<b>2. Operation Manual</b>	<b>5</b>
<b>2.1 communication</b>	<b>5</b>
2.1.1 mode	5
2.1.2 Ethernet	6
2.1.3 serial	6
2.1.4 IP Seaching and Setting	6
<b>2.2 Base setting</b>	<b>8</b>
2.2.1 Merchandise	8
a. Query	8
b. Filter	9
c. Delete	9
d. Download	9
e. Callback	10
f. Export	11
g. Import	11
2.2.2 Label	12
a. New	12
b. Hotkey	13
c. Advertisement	14
d. Text	15
e. Clock	15
f. Other	15
g. Initial	16
<b>3. Report</b>	<b>17</b>
<b>3.1 Record query</b>	<b>17</b>
<b>3.2 Daily report</b>	<b>18</b>
<b>3.3 Monthly report</b>	<b>18</b>
<b>3.4 Stall report</b>	<b>18</b>

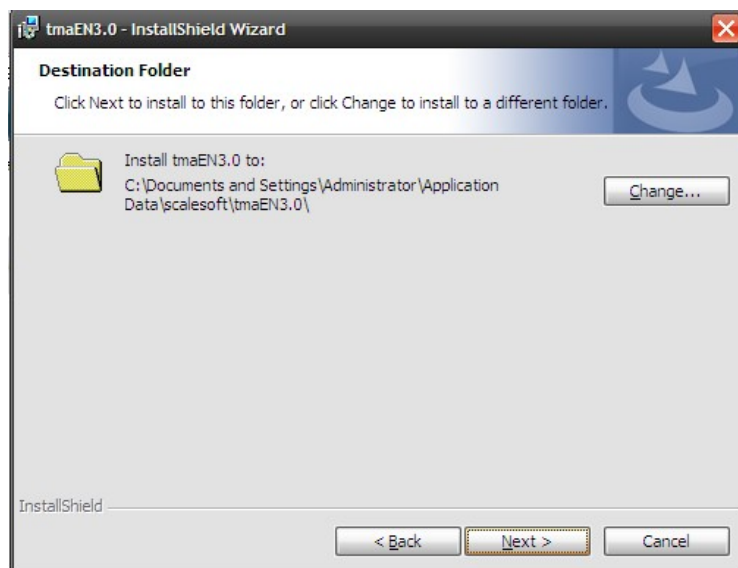
# 1. Software install

Click  , and install the software.



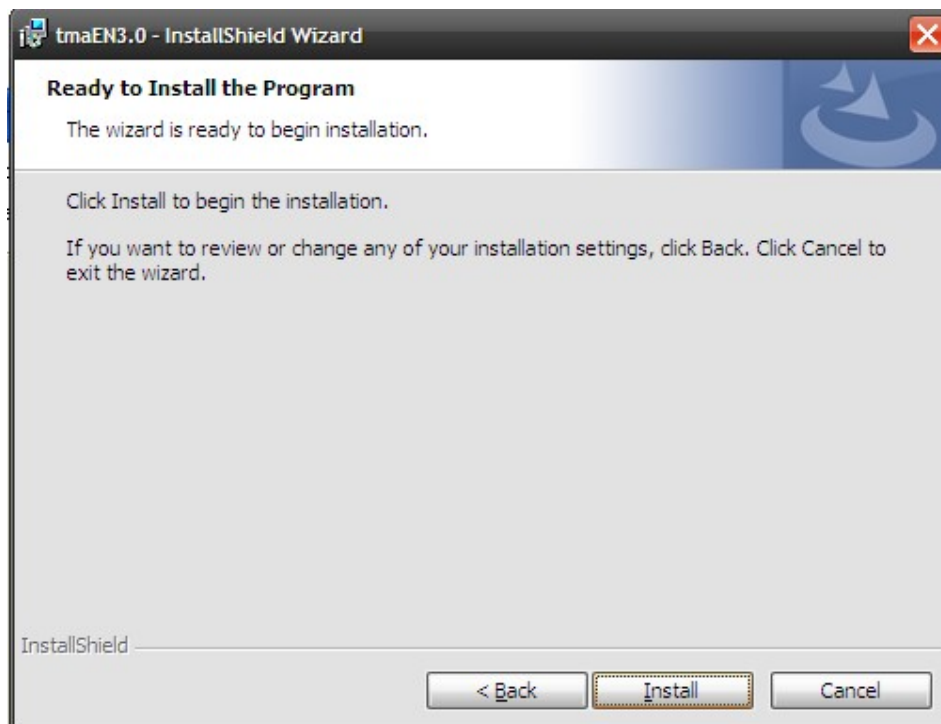
Picture1.1

Click “next”to next step.



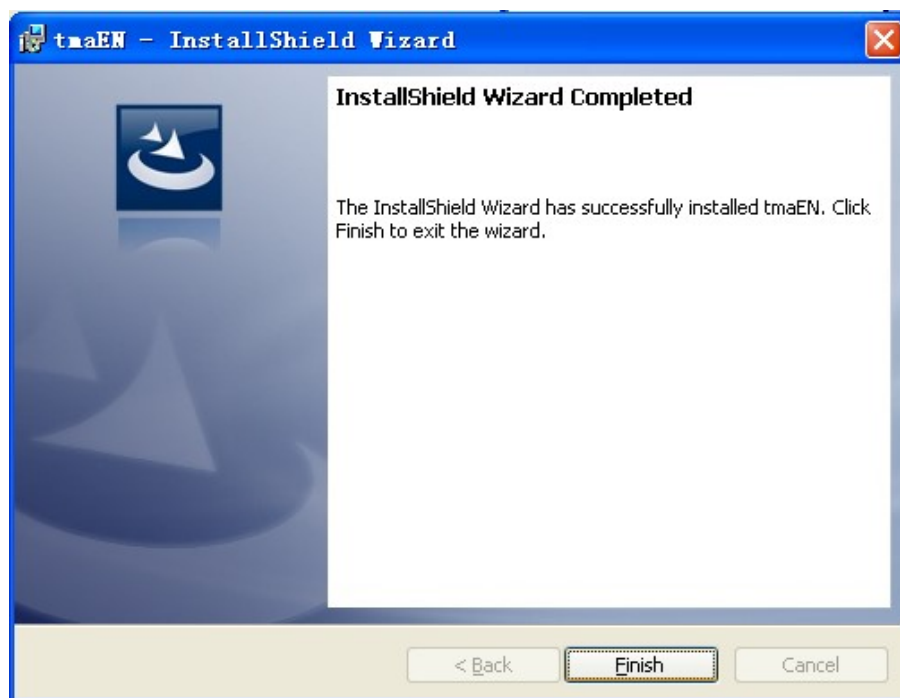
Picture1.2

Click “change” change setting path. It’s better build a new folder, then click “next”



Picture1.3

Click “install” to next step




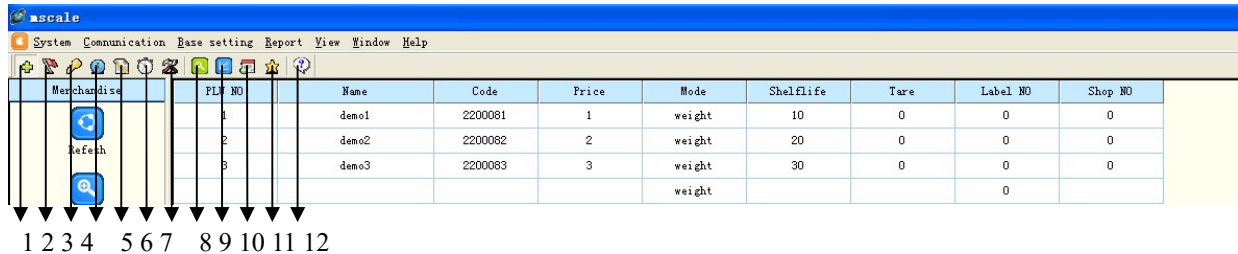
Picture1.4

Setting is over and will have a shortcut picture on the desktop.

## 2. Operation Manual



Open  on the desktop, there is a main interface (picture 2.1)



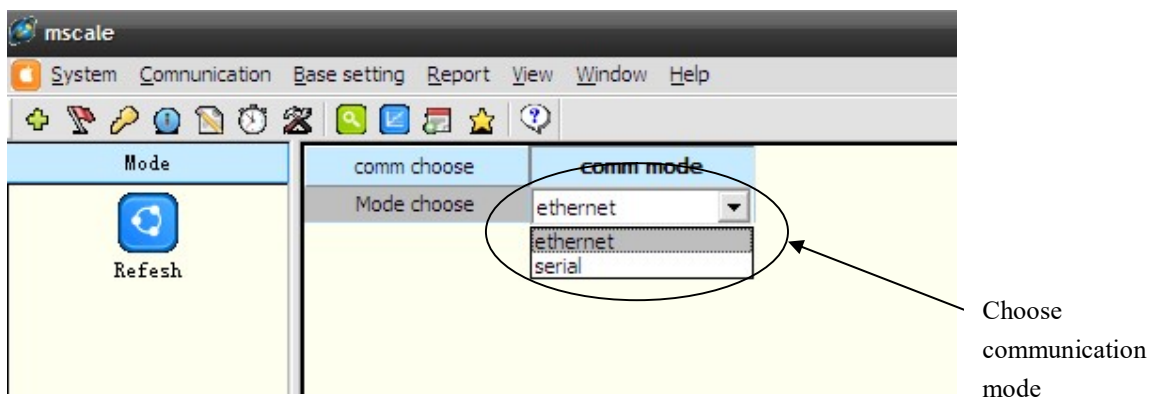
Picture 2.1 main interface

Picture 2.1 the arrows means:

1. merchandise setting
2. label setting
3. hotkey setting
4. advertisement information setting
5. text information setting
6. clock setting
7. other parameter setting
8. record query
9. daily report
10. monthly report
11. stall query
12. about mscale

### 2.1 communication

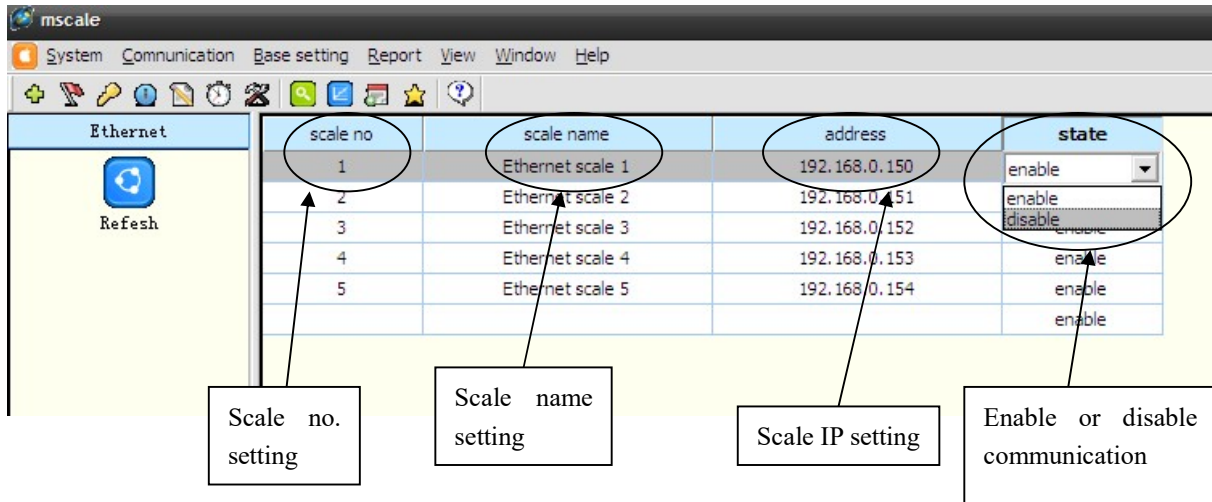
#### 2.1.1 mode



Picture 2.2 main interface

Choose communication → mode, and then choose communication mode “ethernet” or “serial”

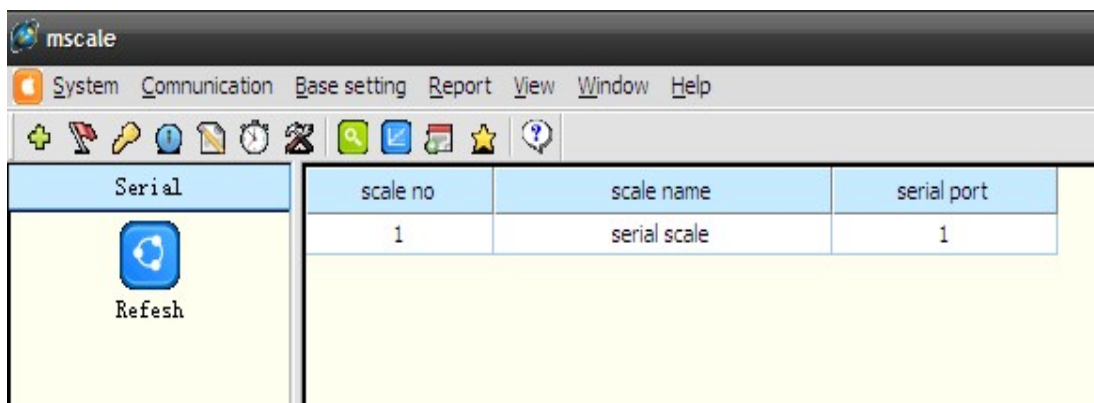
## 2.1.2 Ethernet



Picture 2.3 Ethernet setting

Choose communication → Ethernet, and then set scale no. ,scale name,scale IP address and state setting.

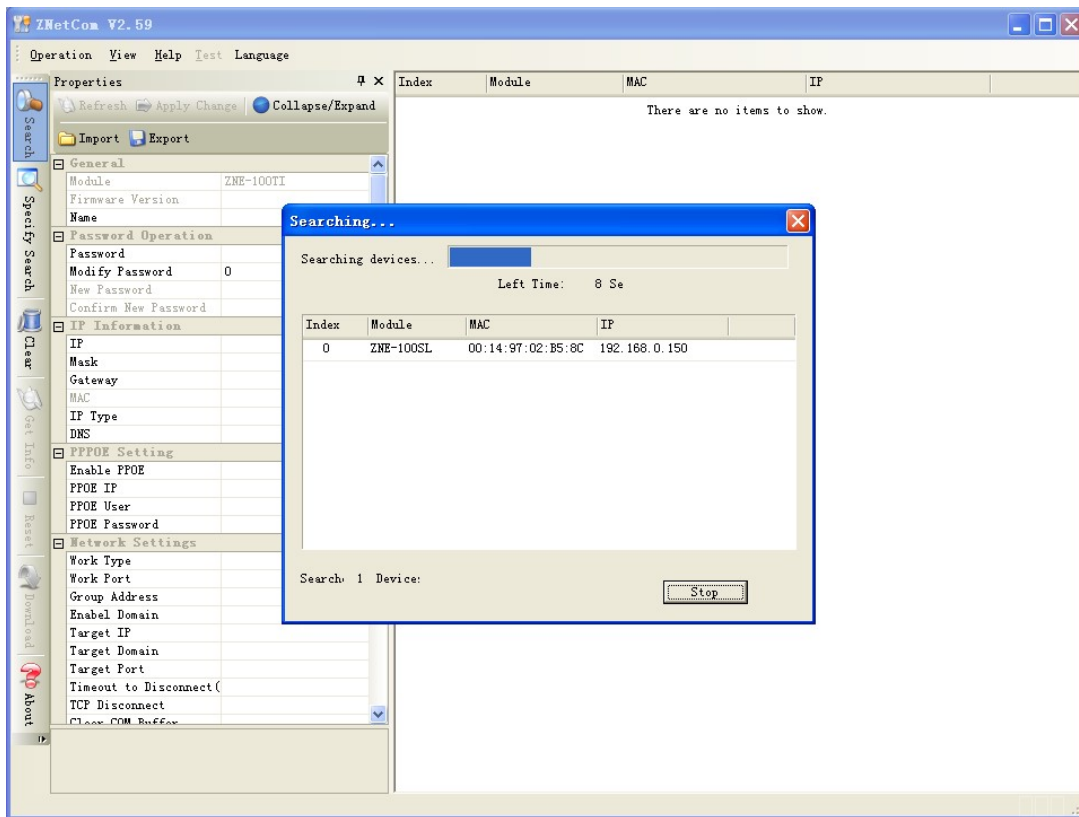
## 2.1.3 serial



Picture 2.4 serial setting

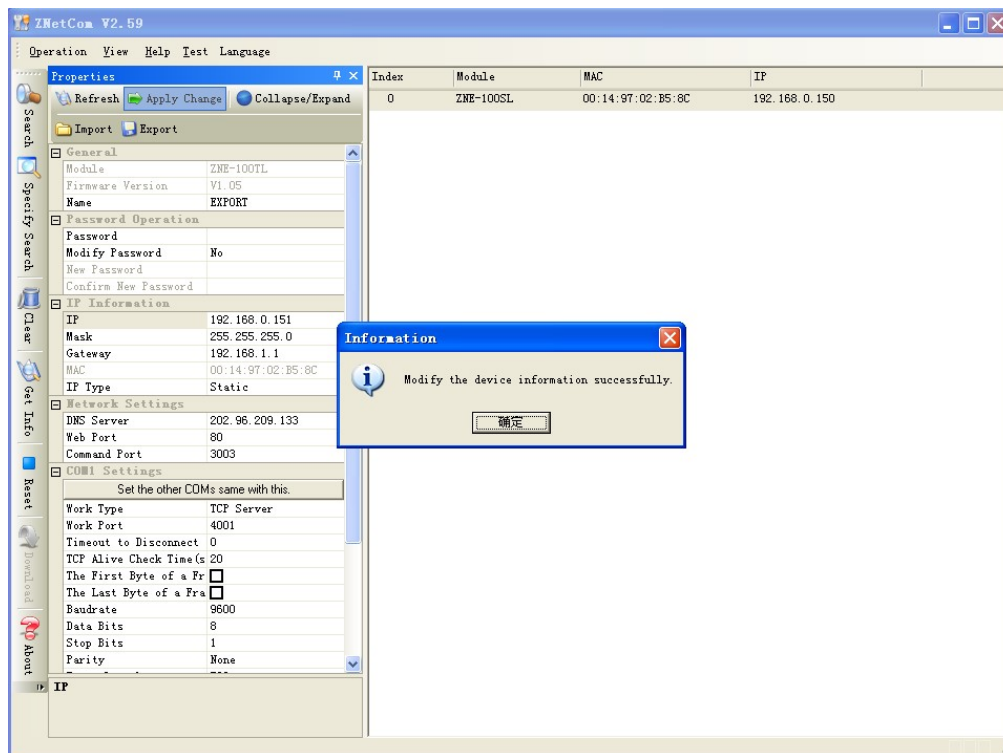
Choose communication → Serial, then set scale no., scale name and serial port. Like picture 2.4

## 2.1.4 IP Seaching and Setting



Picture 2.5 IP seaching and setting

Choose communication → Znet, search scale IP address like picture 2.5

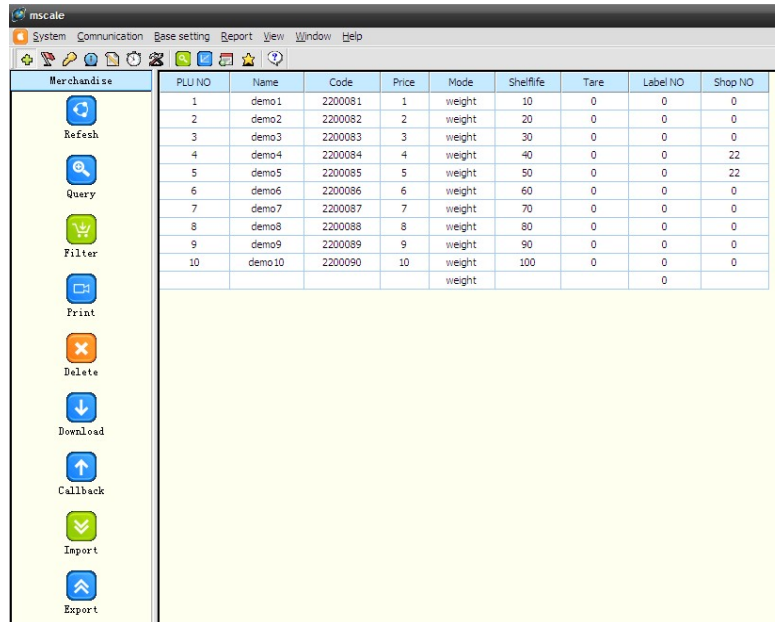


Picture 2.6 IP seach and setting

## 2.2 Base setting

### 2.2.1 Merchandise

Merchandise setting include query,filter download,callback,import,export etc. Choose base setting→merchandise→open the window like picture 2.7--> fill in merchandise information. (Blank can be empty, but Plu Number can not be ) .



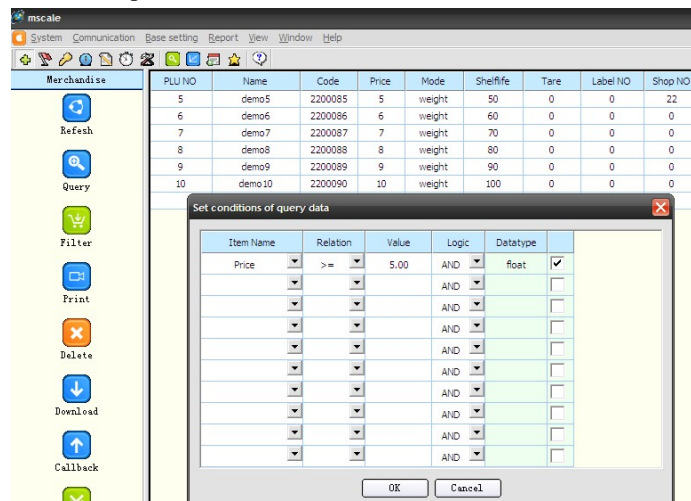
PLU NO	Name	Code	Price	Mode	Shelflife	Tare	Label NO	Shop NO
1	demo1	2200081	1	weight	10	0	0	0
2	demo2	2200082	2	weight	20	0	0	0
3	demo3	2200083	3	weight	30	0	0	0
4	demo4	2200084	4	weight	40	0	0	22
5	demo5	2200085	5	weight	50	0	0	22
6	demo6	2200086	6	weight	60	0	0	0
7	demo7	2200087	7	weight	70	0	0	0
8	demo8	2200088	8	weight	80	0	0	0
9	demo9	2200089	9	weight	90	0	0	0
10	demo10	2200090	10	weight	100	0	0	0

Picture 2.7 merchandise setting

#### a. Query

Choose base setting→merchandise, click query like picture 2.8, item name choose item,

For example, item name choose price,relation choose  $\geq$ ,value choose 5.00, means when the price $\geq$ 5, can show merchandise information,like picture2.8



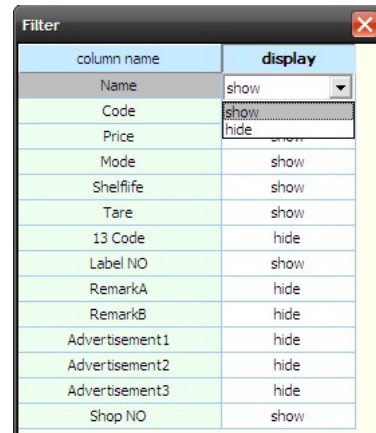
Item Name	Relation	Value	Logic	Datatype	
Price	$\geq$	5.00	AND	float	<input checked="" type="checkbox"/>
			AND		<input type="checkbox"/>
			AND		<input type="checkbox"/>
			AND		<input type="checkbox"/>
			AND		<input type="checkbox"/>
			AND		<input type="checkbox"/>
			AND		<input type="checkbox"/>
			AND		<input type="checkbox"/>
			AND		<input type="checkbox"/>

Picture 2.8 query setting



## b. Filter

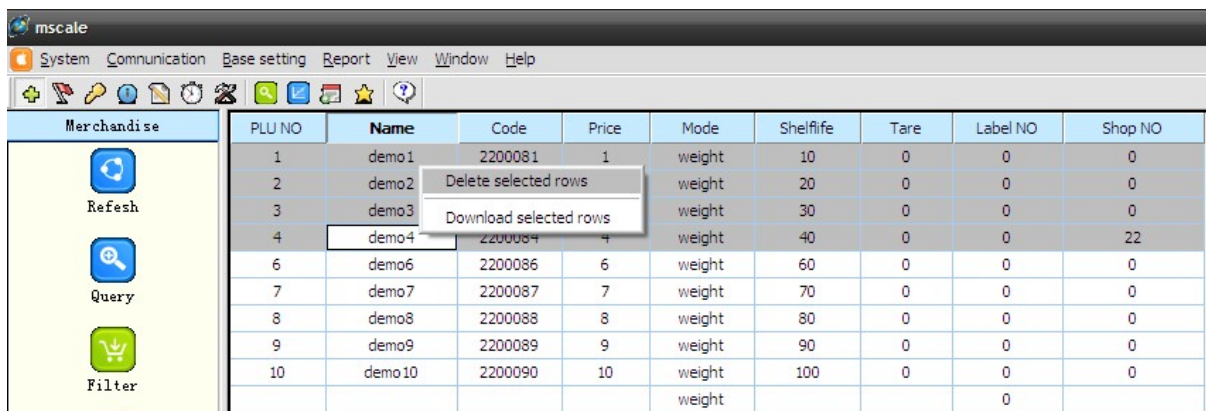
Filter means show or hide every merchandise information column, like picture 2.9



Picture2.9 filter setting

## c. Delete

delete means delete one or some selected merchandise information, like picture 2.10



Picture2.10 delete merchandise information setting

## d. Download

Before download, first choose communication, like picture 2.2. If it is Ethernet scale, first set the scale IP address, like picture 2.3.

Choose base setting → merchandise → download, then select scale IP address, like picture 2.11, also can select some merchandise information, then download, like picture 2.10

NO.	IP Address	Port	State	Count	Percentage
1	192.168.0.150	4001	Communication success	10	100.00%
2	192.168.0.151	4001	Connecting...		
3	192.168.0.152	4001	Connecting...		
4	192.168.0.153	4001	Connecting...		
5	192.168.0.154	4001	Connecting...		

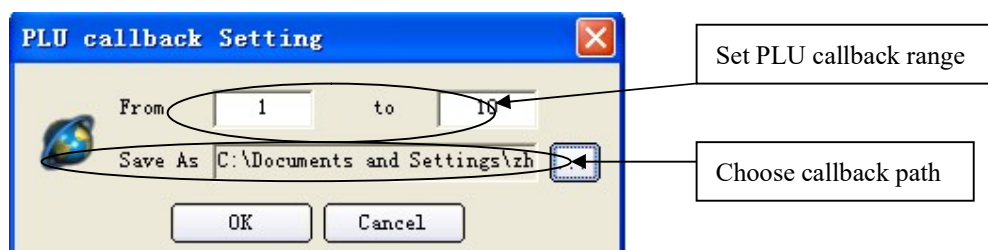
00:00:04

Cancel

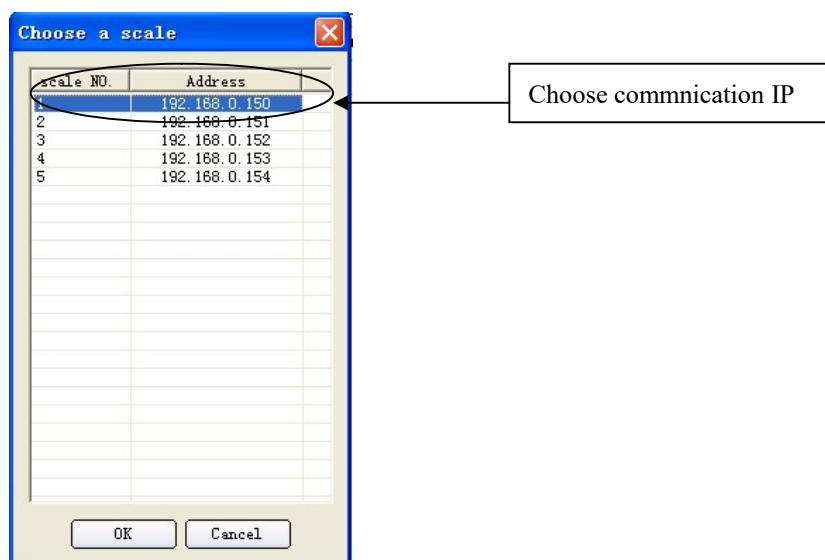
Picture2.11 download

## e. Callback

Choose base setting→merchandise→callback,like picture2.12



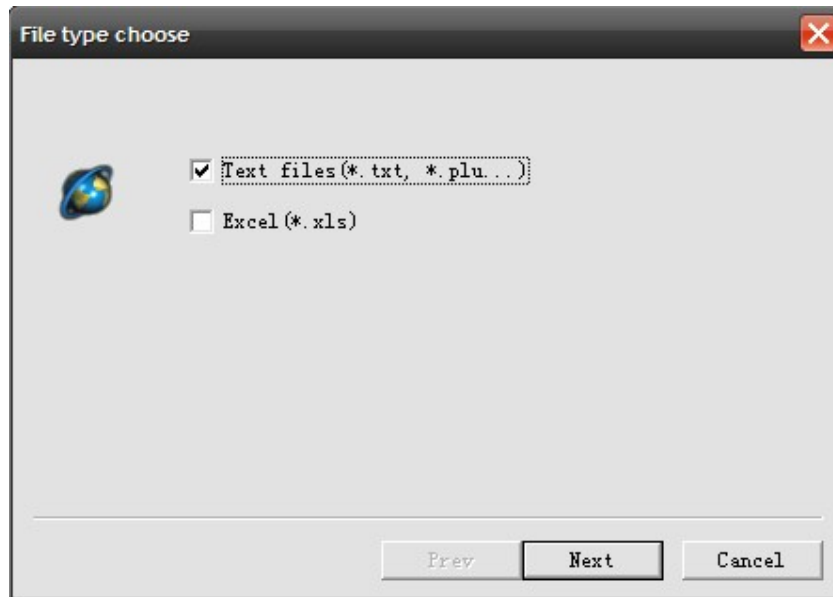
picture2.12



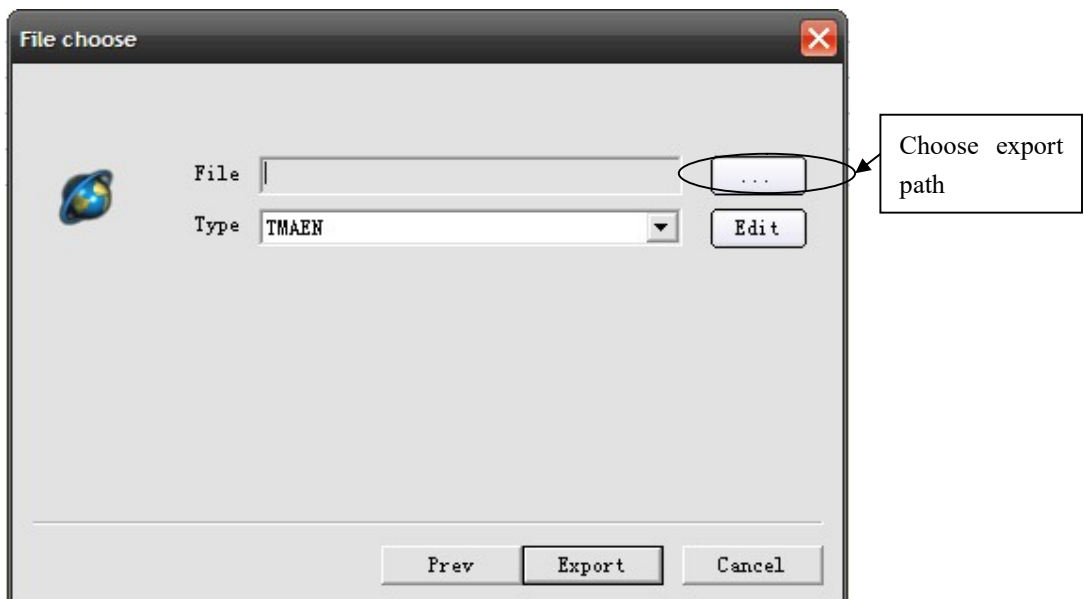
picture2.12

## f. Export

Choose base setting→ merchandise→export,like picture2.13,choose file type “text files” or “excel”.



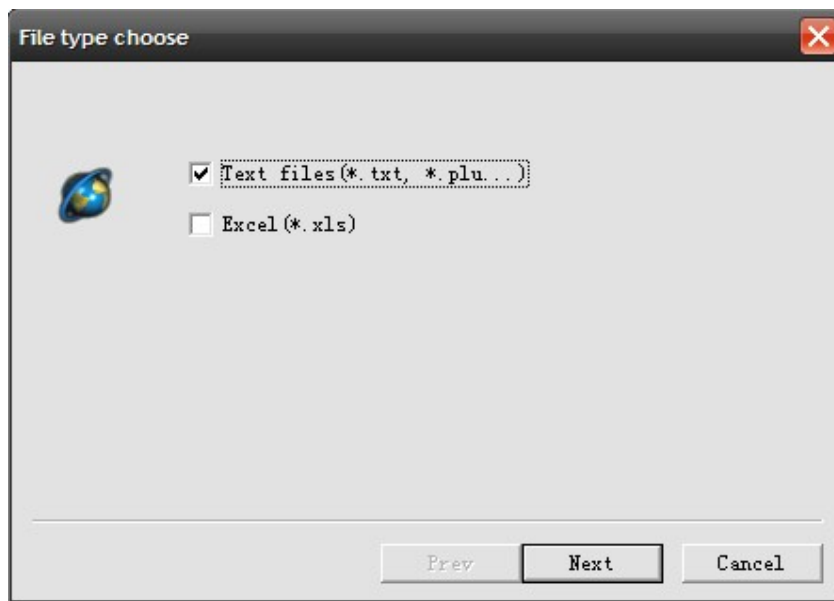
picture2.13 PLU export



picture2.14

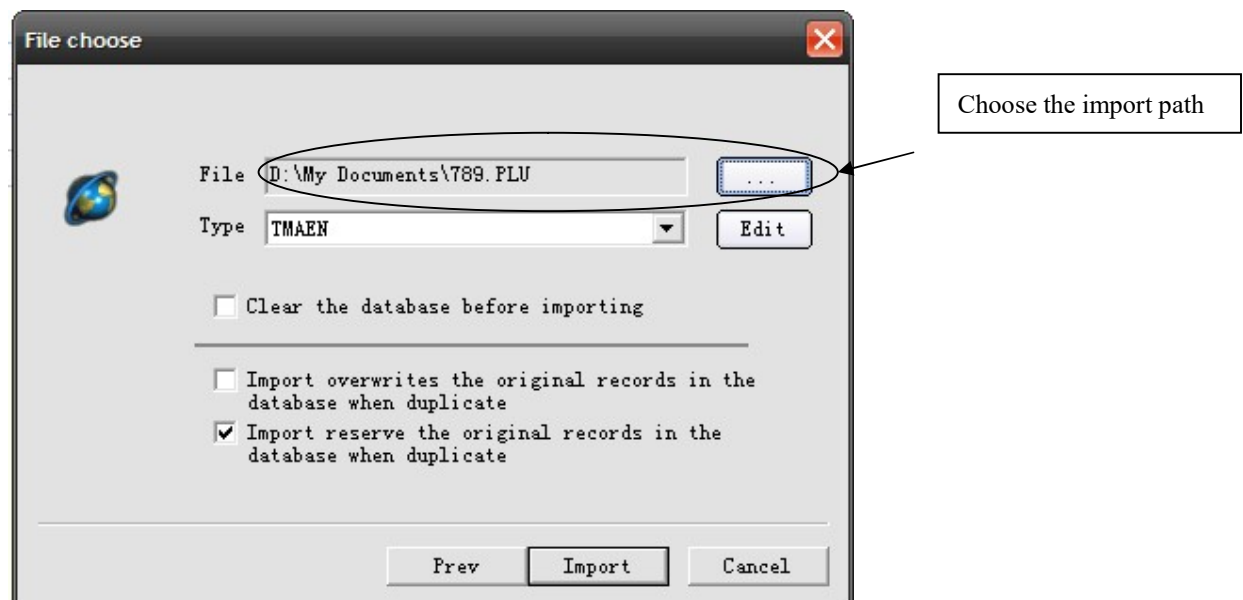
## g. Import

Choose base setting→ merchandise→import,like picture2.15,choose file type “text files” or “excel”. Then click “next” ,like picture 2.15, then choose import type and path, click “import” .



picture2.15

If choose “clear the database before importing” ,it will clear all original PLU information.



picture2.16

## 2.2.2 Label

label setting main include download and callback

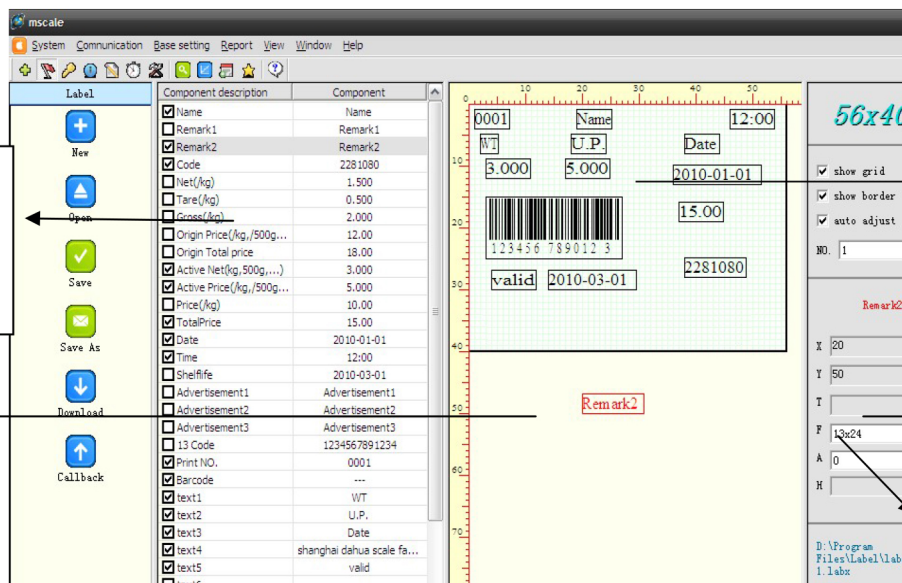
### a. New

Label setting simulates each tag item’s position in the actual label. Each tag item has coordinates, you can drag it to change its position in the actual label.

Choose base setting→label→new, new build a new label,like picture 2.17



picture2.17



picture2.18

Like picture 2.18, new do a label, choose left frame A area , it will have a item on the B area,then drag it to C area,if it is text and can edit it on the right D area.

Set is over , can save it or download it .

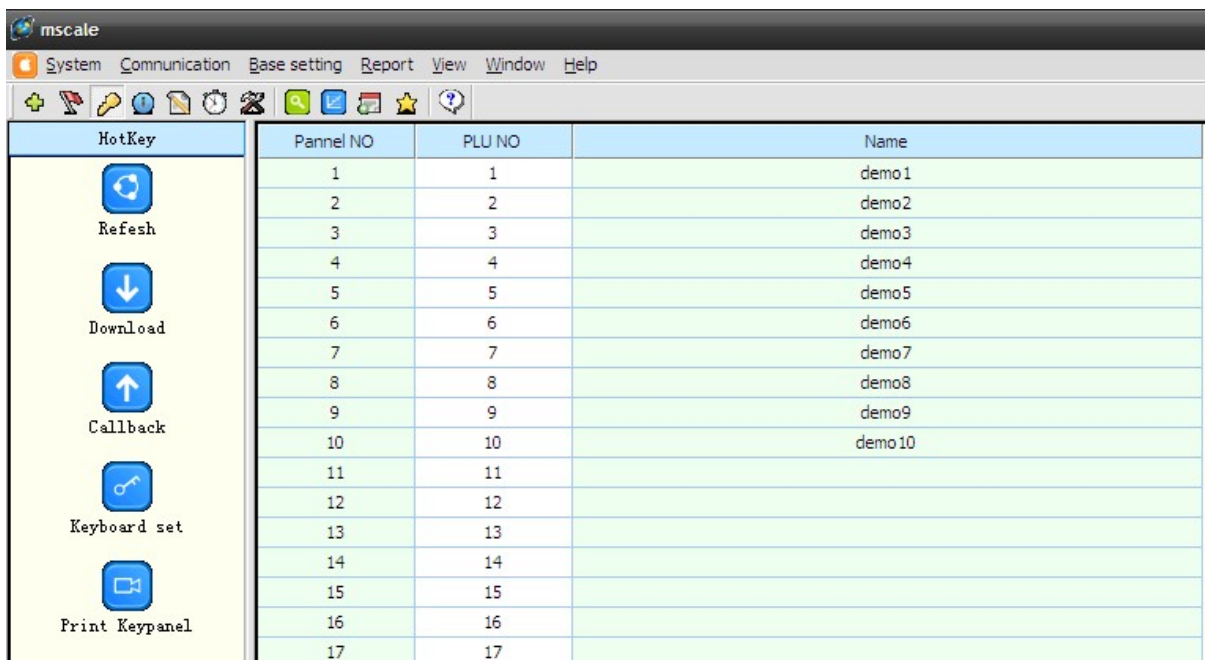
**NOTE: set the weight , should set active net**

## b. Hotkey

hotkey main include download, callback,keyboard set

Choose base setting→hotkey, like picture 2.19

set pannel NO. and PLU NO. and merchandise name ,download and callback is the same merchandise

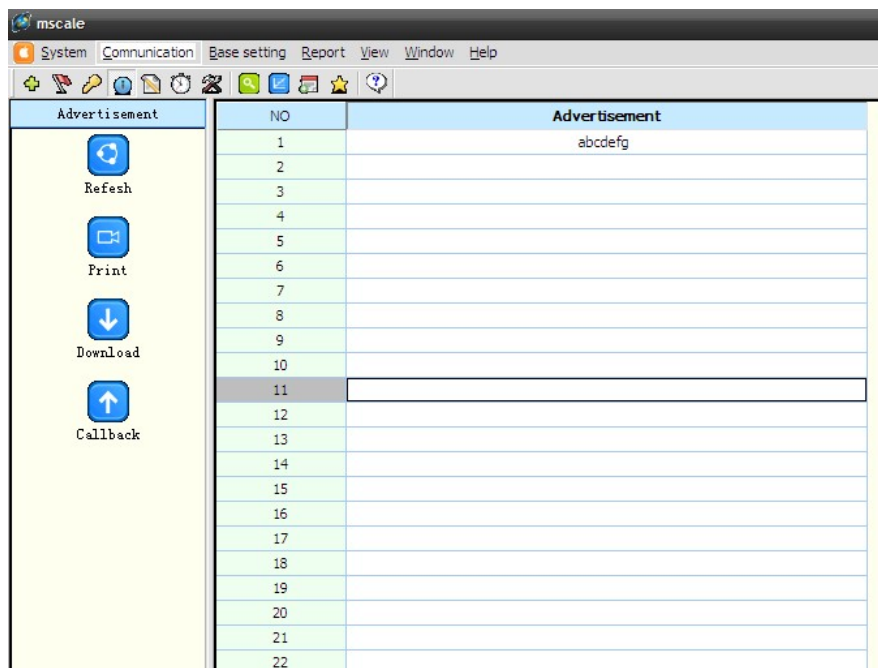


Picture 2.19

### c. Advertisement

Choose base setting→advertisement, like picture 2.20, on the “advertisement” column edit the advertisement and download or callback

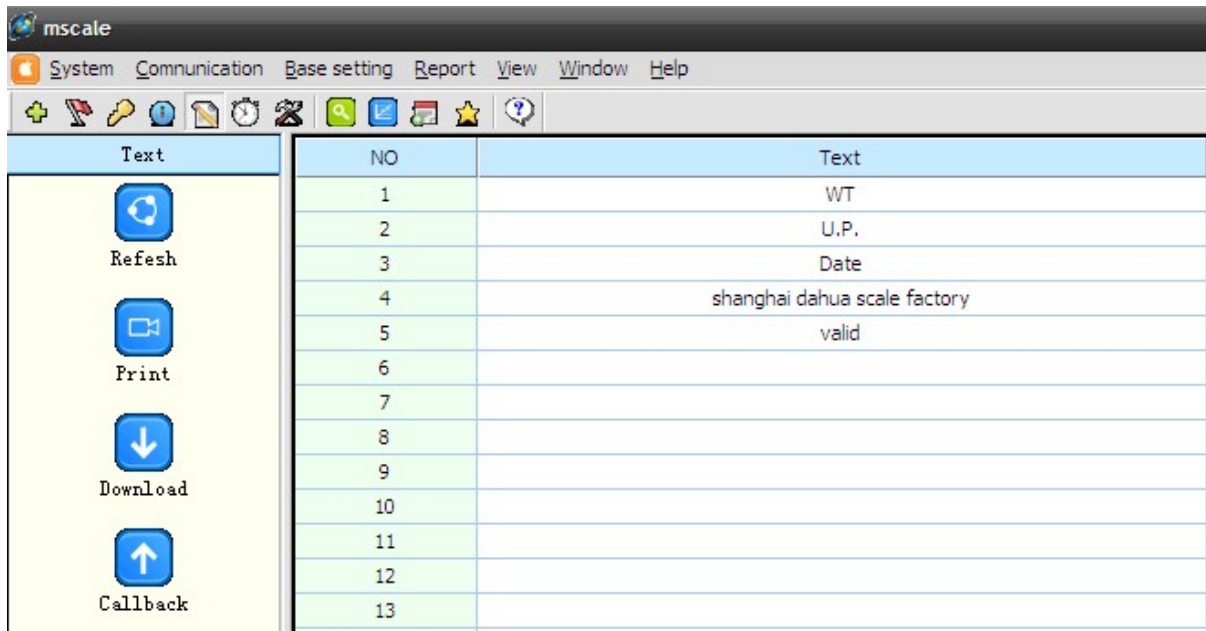
Same as Label Setting, If want modify current scale, callback the current settings then start modify. Click Download button to return back (save) to the scale



Picture 2.20

## d. Text

Choose base setting→text, like picture 2.21, on the “text” column edit the text and download or callback

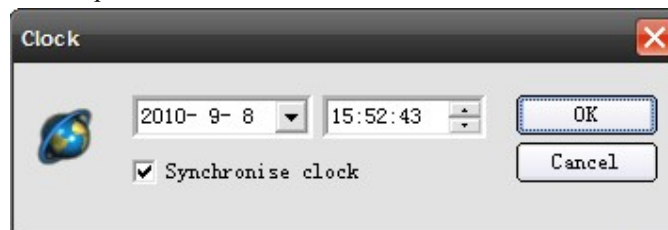


Picture 2.21

## e. Clock

Choose base setting→clock, like picture 2.22

Set scale Time to be same as computer



Picture 2.22

## f. Other

Choose base setting→other, like picture 2.23

Other main include common parameter and continuous paper setting.

Same as Label Setting, If want modify current scale, callback the current settings then start modify. Click Download button to return back(save) to the scale.

**Other**

Common param Continuous paper

Barcode	FFWWWWEEEEEC	Units of Net	kg
Date	P.:2006/01/01 V.:2006/01/01	Units of U.P.	/kg
Lock Price	U.P. Open, T.P. Lock	Price point	Max 2 bit after PT[1.23]
T.P. Last Bit	Reserve	Cashbox	Open
R1 T.P. L.Bit	Drop	Print Chroma	8
Auto zero	Don't zero after printing		
Range	single		

Download Callback Cancel

Picture 2.23

**Other**

Common param Continuous paper

Print barcode	Don't print	Font of text	Standard font
Font of head1	Don't print	Font of tail1	Don't print
Font of head2	Don't print	Font of tail2	Don't print
Font of head3	Don't print	Font of tail3	Don't print
Font of head4	Don't print	Font of tail4	Don't print

Download Callback Cancel

Picture 2.24

## g. Initial

Initialization (picture 2.25), main function: Clear sales data; Clear PLU database in the scale; Initialize system parameter. This function is usually used in the factory. If must use it, suggest callback the PLU and sales data, to avoid lose the data in the scale.





Picture 2.25

## 3. Report

Report main include record query, daily report, monthly report.

### 3.1 Record query

Choose report → record query → callback, like picture 3.1, click finish, like picture 3.2 detail sales report.

Picture 3.1 record callback

NO.	IP Address	Port	State	Count	Percentage
1	192.168.0.150	4001	Communication success	7	--
2	192.168.0.151	4001	Connection failed		
3	192.168.0.152	4001	Connection failed		
4	192.168.0.153	4001	Connection failed		
5	192.168.0.154	4001	Connection failed		

00:00:17 Finish

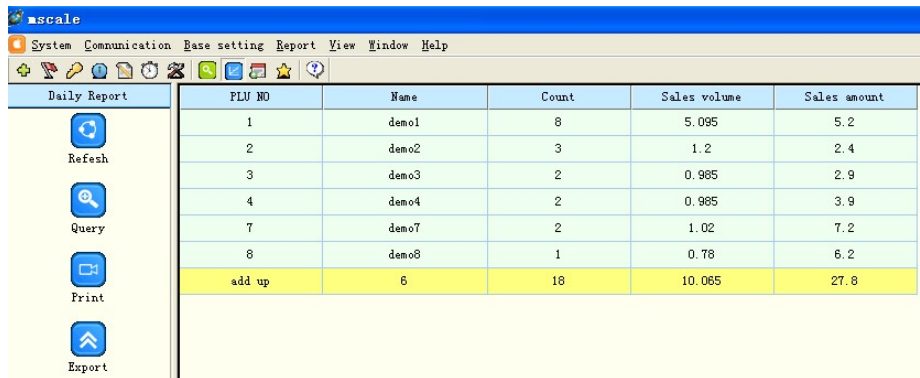
Picture 3.1

mscale							
System Communication Base setting Report View Window Help							
Record Query	Time	PLU NO	Weight	Mode	Price	Total Price	Scale NO
Refresh	2010-09-09 08:49:00	1	0.780	weight	1.00	0.80	1
Query	2010-09-09 08:49:00	2	0.780	weight	2.00	1.60	1
Filter	2010-09-09 08:49:00	4	0.780	weight	4.00	3.10	1
	2010-09-09 08:49:00	1	0.780	weight	1.00	0.80	1
	2010-09-09 08:49:00	7	0.780	weight	7.00	5.50	1
	2010-09-09 08:49:00	8	0.780	weight	8.00	6.20	1
	2010-09-09 08:49:00	1	0.780	weight	1.00	0.80	1

Picture 3.2 sale record

## 3.2 Daily report

Choose report→daily report→callback,like picture3.3

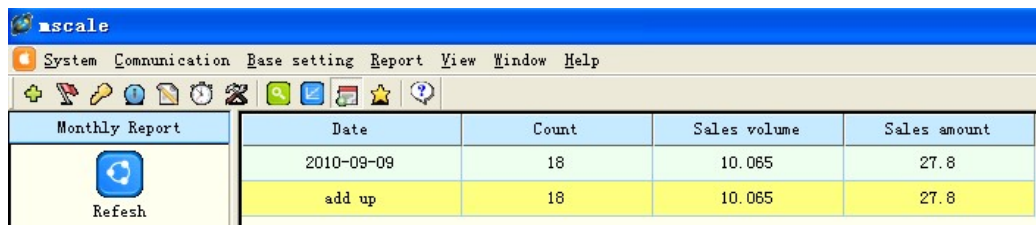


FLU NO	Name	Count	Sales volume	Sales amount
1	demo1	8	5.095	5.2
2	demo2	3	1.2	2.4
3	demo3	2	0.985	2.9
4	demo4	2	0.985	3.9
7	demo7	2	1.02	7.2
8	demo8	1	0.78	6.2
add up	6	18	10.065	27.8

Picture 3.3 daily report

## 3.3 Monthly report

Choose report→monthly report→callback,like picture3.4

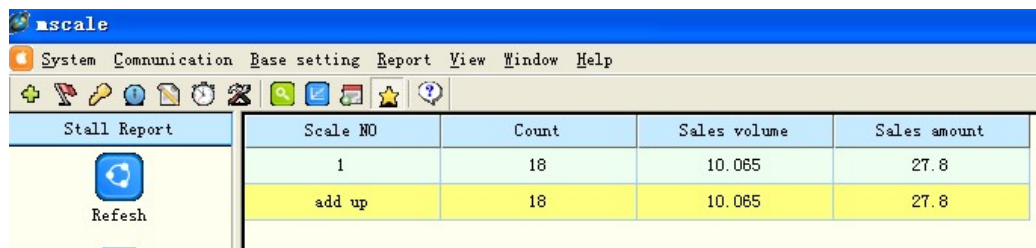


Date	Count	Sales volume	Sales amount
2010-09-09	18	10.065	27.8
add up	18	10.065	27.8

Picture3.4 monthly report

## 3.4 Stall report

Choose report→stall report→callback,like picture3.5



Scale NO	Count	Sales volume	Sales amount
1	18	10.065	27.8
add up	18	10.065	27.8

Picture 3.5 stall report

# ASCII CODE

0	00	NUL
1	01	SOH
2	02	STX
3	03	ETX
4	04	EOT
5	05	ENQ
6	06	ACK
7	07	BEL
8	08	BS
9	09	HT
10	0A	LF
11	0B	VT
12	0C	FF
13	0D	CR
14	0E	SO
15	0F	SI
16	10	DLE
17	11	DC1
18	12	DC2
19	13	DC3
20	14	DC4
21	15	NAK
22	16	SYN
23	17	ETB
24	18	CAN
25	19	EM
26	1A	SUB
27	1B	ESC
28	1C	FS
29	1D	GS
30	1E	RS

32	20	
33	21	!
34	22	"
35	23	#
36	24	\$
37	25	%
38	26	&
39	27	'
40	28	(
41	29	)
42	2A	*
43	2B	+
44	2C	,
45	2D	-
46	2E	.
47	2F	/
48	30	0
49	31	1
50	32	2
51	33	3
52	34	4
53	35	5
54	36	6
55	37	7
56	38	8
57	39	9
58	3A	:
59	3B	;
60	3C	<
61	3D	=
62	3E	>

64	40	@
65	41	A
66	42	B
67	43	C
68	44	D
69	45	E
70	46	F
71	47	G
72	48	H
73	49	I
74	4A	J
75	4B	K
76	4C	L
77	4D	M
78	4E	N
79	4F	O
80	50	P
81	51	Q
82	52	R
83	53	S
84	54	T
85	55	U
86	56	V
87	57	W
88	58	X
89	59	Y
90	5A	Z
91	5B	[
92	5C	\
93	5D	]
94	5E	^

96	60	`
97	61	a
98	62	b
99	63	c
100	64	d
101	65	e
102	66	f
103	67	g
104	68	h
105	69	i
106	6A	j
107	6B	k
108	6C	l
109	6D	m
110	6E	n
111	6F	o
112	70	p
113	71	q
114	72	r
115	73	s
116	74	t
117	75	u
118	76	v
119	77	w
120	78	x
121	79	y
122	7A	z
123	7B	{
124	7C	
125	7D	}
126	7E	~

128	80	Ç
129	81	Ü
130	82	é
131	83	ā
132	84	ä
133	85	à
134	86	ã
135	87	ç
136	88	ê
137	89	ë
138	8A	è
139	8B	ï
140	8C	í
141	8D	ì
142	8E	Á
143	8F	À
144	90	É
145	91	æ
146	92	Æ
147	93	ô
148	94	ö
149	95	ó
150	96	û
151	97	ù
152	98	ÿ
153	99	Ö
154	9A	Ü
155	9B	Ç
156	9C	£
157	9D	¥
158	9E	Pt

160	A0	á
161	A1	í
162	A2	ô
163	A3	ú
164	A4	ñ
165	A5	Ñ
166	A6	•
167	A7	°
168	A8	¿
169	A9	¡
170	AA	¬
171	AB	½
172	AC	¼
173	AD	¡
174	AE	•
175	AF	•
176	B0	•
177	B1	•
178	B2	•
179	B3	•
180	B4	•
181	B5	•
182	B6	•
183	B7	•
184	B8	•
185	B9	•
186	BA	•
187	BB	•
188	BC	•
189	BD	•
190	BE	•

192	C0	Ł
193	C1	ł
194	C2	ŧ
195	C3	ŧ
196	C4	—
197	C5	+
198	C6	ƒ
199	C7	ƒ
200	C8	Ł
201	C9	ƒ
202	CA	Ł
203	CB	ƒ
204	CC	ƒ
205	CD	=
206	CE	ƒ
207	CF	Ł
208	D0	Ł
209	D1	ƒ
210	D2	Ł
211	D3	Ł
212	D4	Ł
213	D5	ƒ
214	D6	ƒ
215	D7	ƒ
216	D8	ƒ
217	D9	Ł
218	DA	Ł
219	DB	•
220	DC	•
221	DD	•
222	DE	•

224	E0	α
225	E1	β
226	E2	Γ
227	E3	π
228	E4	Σ
229	E5	σ
230	E6	μ
231	E7	τ
232	E8	Φ
233	E9	Θ
234	EA	Ω
235	EB	δ
236	EC	∞
237	ED	Φ
238	EE	ε
239	EF	∩
240	FO	≡
241	F1	±
242	F2	>
243	F3	<
244	F4	┐
245	F5	┐
246	F6	+
247	F7	≈
248	F8	°
249	F9	•
250	FA	•
251	FB	✓
252	FC	•
253	FD	•
254	FE	•

